



**FRESENIUS
KABI**

caring for life



COM.TEC[®]

Therapeutic apheresis and cell collection

The COM.TEC system provides flexible options for therapeutic and platelet apheresis.

Tailored procedures for patients and donors

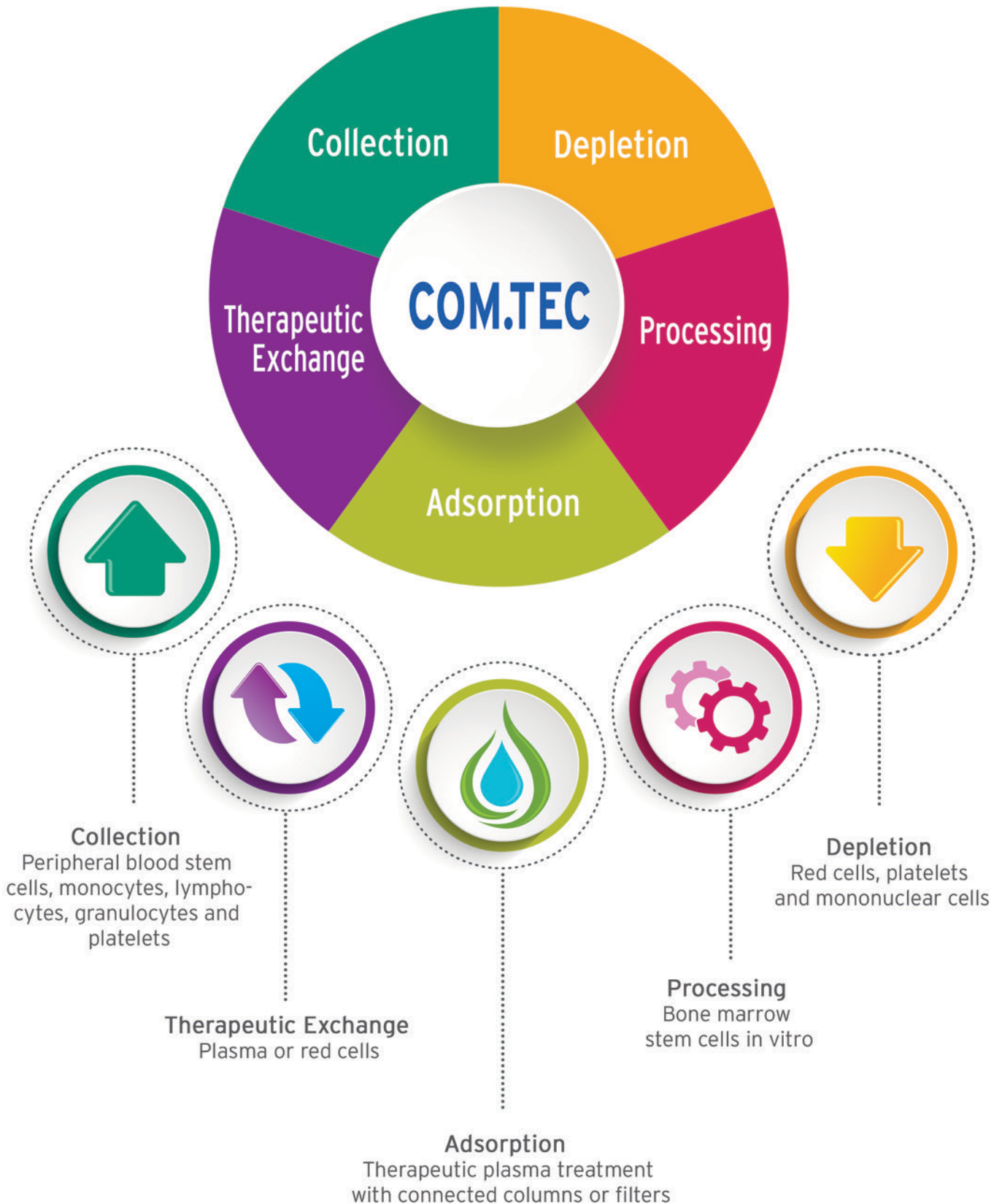
Optical interface monitoring

Yield prediction for stem cell collection

Automatic procedure printout

Versatility by design

COM.TEC's flexible framework offers multiple applications for plasma exchange, red blood cell exchange, stem cell collections, cell depletions and platelet collections.



Advanced interface management system

COM.TEC allows operators the ability to choose manual or automated options for highly efficient procedures.

Therapeutics and Depletions

- Completely automated interface setting and control for all procedures
- Highly efficient therapeutic protocols
- Emergency single needle option
- Depletion of red cells, platelets or mononuclear cells

Leukocyte Collection

- Variable protocol selection for different donor/patient conditions and different target cells
- Lymphocyte collection for consecutive photo-chemotherapy or donor lymphocyte infusions
- Emergency single needle option
- CD34+ prediction

Platelet Donation

- Process-leukoreduced platelet collection
- Platelet collection in dual- or single-needle mode available
- Donor-tailored separation parameters
- Simultaneous plasma harvest option





Reliable technology, simple and efficient.

Proven technology and reliable monitoring makes the COM.TEC system a user-friendly option for a variety of therapeutic apheresis procedures and cell collection.



Reliable quality to help you support your patients' needs.

Tailored procedures for patients and donors

A wide range of different applications in donation as well as therapeutic apheresis is available in single or double needle mode.

Automatic or manual process management

The operator can select to run the procedure in an automated or manual mode. COM.TEC allows for manual interaction at any time during a procedure.

Yield prediction for stem cell collection

Prior to start, COM.TEC will calculate and predict the expected stem cell yield based on the donor's/patient's blood pre-values.

Automatic procedure printout

GMP compliance documentation of all significant parameters for each procedure are available in real time.

Optical interface monitoring

The position of the interfacial boundary between cell fractions and plasma is automatically controlled by means of an optical sensor.

Therapeutic Programs

	Description	DN/SN	Disposable
Depletion	Depletion of platelets or platelets and lymphocytes	DN	C4L
TPE	Therapeutic Plasma exchange	DN/SN*	PL1
Adsorption	Plasma treatment with connected columns or filters	DN	P1R
RBC	Replacement or depletion of red blood cells	DN	PL1

Leukocyte Programs

	Description	DN/SN	Disposable
PBSC-Lymphocytes	Separation of peripheral stem cells and/or lymphocytes	DN/SN*	C4Y
RV-PBSC	Collection of peripheral stem cells in a small concentrate volume	DN/SN*	RVY
BMSC	Separation of stem cells from the bone marrow (in-vitro procedure)		P1Y + BMSC
Granulocyte	Collection of granulocytes	DN/SN*	P1Y
MNC	Peripheral blood stem cell collection, mononuclear cell collection or depletion	DN/SN*	P1Y
autoMNC stem cells	Automatic collection of peripheral blood stem cells, mononuclear cell collection or depletion	DN	P1YA
autoMNC lymphocytes	Automatic collection of lymphocytes in dual needle mode for consecutive photochemotherapy or DLI**	DN	P1YA

Platelet Programs

	Description	DN/SN	Disposable
PLT-5d	Platelet collection allowing storage of platelets for up to 5 days	DN	C5L C5LT
PLT-5d-SN	Platelet collection allowing storage of platelets for up to 5 days	SN	S5L

* SN emergency operation possible

** DLI donor lymphocyte infusion

The sign/names marked with ® are registered trademarks of the Fresenius Group in selected countries